

# P5735SS | P5735WS

GB | Wireless Doorchime

---



## Contents

Safety Instructions and Warnings .....	2
Technical Specifications .....	3
Description .....	4
Installation and Assembly .....	6
Mobile App .....	8
Controls and Functions .....	10
Troubleshooting FAQ .....	13

## Safety Instructions and Warnings



Read the user manual before using the device.



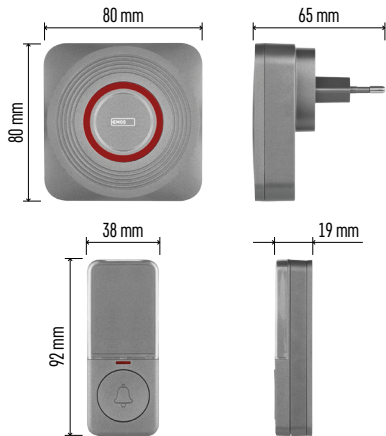
Follow the safety instructions in the manual.

- The chime (receiver) is designed for indoor use in dry environments only.
- The chime must be placed in an easily accessible location for ease of handling and unplugging.
- Occasionally check the functioning of the doorbell button and replace the battery in a timely manner. Use only high-quality lithium batteries with the prescribed parameters.
- When the doorchime is not used for a long time, remove the battery from the doorbell button.
- Do not subject the button or chime to excessive vibrations and shocks.
- Do not subject the button or chime to excessive heat and direct sunlight or moisture.
- When cleaning the chime, unplug it from the socket.
- To clean the device, use a slightly moistened cloth with a small amount of detergent; do not use aggressive cleaning agents or solvents.
- The manufacturer is not liable for damage caused by improper use of the device.
- Do not throw batteries into a fire and do not disassemble or short-circuit them.
- Keep the batteries out of reach of children. Ingestion may result in poisoning by chemicals, perforation of soft tissues and death.
- Severe poisoning may occur within two hours of first issues appearing. Seek medical attention immediately.
- The appliance is not intended for use by persons (including children) whose physical, sensory or mental disability, or lack of experience and expertise prevents safe use, unless they are supervised or instructed in the use of the appliance by a person responsible for their safety. Children must always be supervised to ensure they do not play with the appliance.

EMOS spol. s r.o. hereby declares that radio device type P5735SS and P5735WS complies with directive 2014/53/EU.

The full wording of the EU declaration of conformity is available at <http://www.emos.eu/download>.





## Technical Specifications

Transmission range: up to 150 m in an open area

(can drop down to one fifth in a busy area)

Button: water resistant; IP44 enclosure rating

Pairing the chime with buttons: self-learning function

Pairing capacity: maximum of 8 buttons per 1 chime, maximum of 2 buttons per 1 chime in the EMOS GoSmart app

Number of ringtones: 52

Transmission frequency: 433.92 MHz, 10 mW e.r.p. max.

Chime power supply: 230 V AC/50 Hz

Button power supply: 1 × 3 V battery (type CR2032, included)

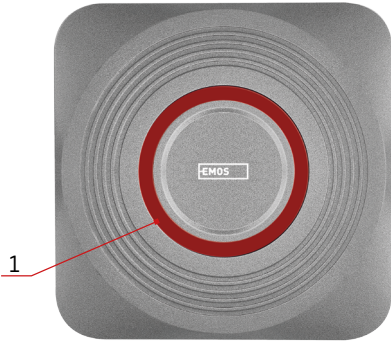
Includes: double-sided adhesive tape



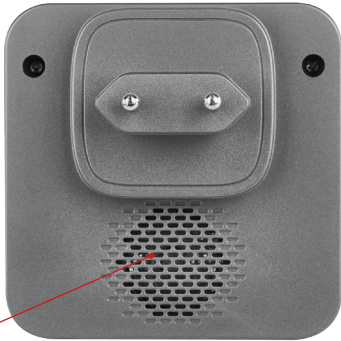
## Description

### Chime Description

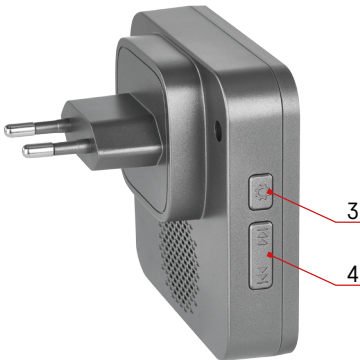
- 1 – bell LED
- 2 – speaker
- 3 – volume setting button
- 4 – ringtone setting button



1

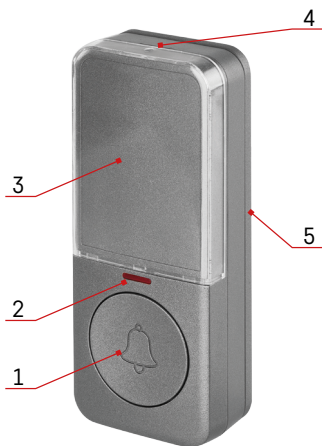


2



3

4





### Button Description

- 1 – ring button
- 2 – button LED
- 3 – nameplate cover
- 4 – hole for opening the battery cover
- 5 – mounting pad



## Installation and Assembly

### Pairing the Button with the Chime


1. Plug the doorbell into a 230 V AC/50 Hz socket.
2. Then, long-press the pairing button  on the chime for ca. 5 seconds.
3. The chime LED will light up; release the  button. The chime will switch to self-learning pairing mode which lasts for 25 seconds.

During this time, press the ring button. The chime will ring and the button is now paired with the chime. This automatically ends self-learning mode.


4. To pair multiple buttons, repeat the process for each button from step 1.

*Note: The chime has an internal memory where it stores the codes of the currently paired buttons for the event of a power failure. There is thus no need to pair buttons again after a power cut.*

### Erasing the Memory of Paired Buttons

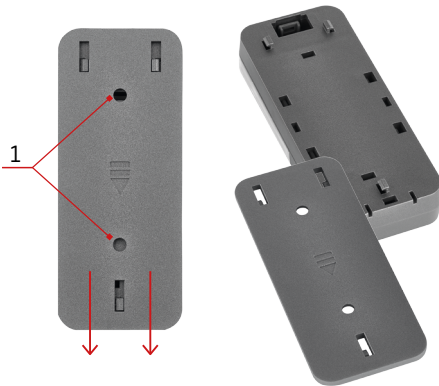
Press and hold the pairing button  on the chime.

Plug the chime into a socket.

The LED of the chime will light up after ca. 5 seconds. Release the  button. The LED will turn off. The memory of all paired buttons will be erased including the buttons in the app.

### Installing the Doorbell Button (Transmitter)

1. Insert a battery into the button. see "Changing the Button's Battery" below.
2. Begin by pairing the button with the chime.
3. Before installation, verify the reliable function of the kit at the selected place.
4. Remove the mounting pad from the battery cover, see the fig. 3.



1 – holes for screws



5. Use the double-sided adhesive tape (included) or two screws (not included) to fix the back of the mounting pad to the wall. Although the button is weather resistant, choose a location where it is protected, e.g. in a wall recess.
6. Fit the mounting pad back onto the button.
7. Press the button to ring the chime. Pressing is accompanied the button's LED lighting up, indicating the button has sent a radio signal. The chime plays the selected ringtone.

*Note: The doorbell button (transmitter) can be placed on wood or brick walls without issue. However, never place the button directly onto metal objects or materials containing metal, such as plastic windows or doors that have a metal frame. In such cases, the transmitter will not work properly.*

## Installing the Chime (Receiver)


1. The chime is designed for indoor use only. When running, it must be plugged in a 230 V AC/50 Hz socket and with free space around it so that it is always accessible.
2. The transmission range (max. 150 m) is influenced by local conditions, such as the number of walls through which the signal passes, metal door frames and other elements which affect the transmission of radio signals (presence of other radio devices operating at a similar frequency, such as wireless thermometers, gate controls etc.). Transmission range can decrease drastically due to these factors.

## Selecting a Ringtone

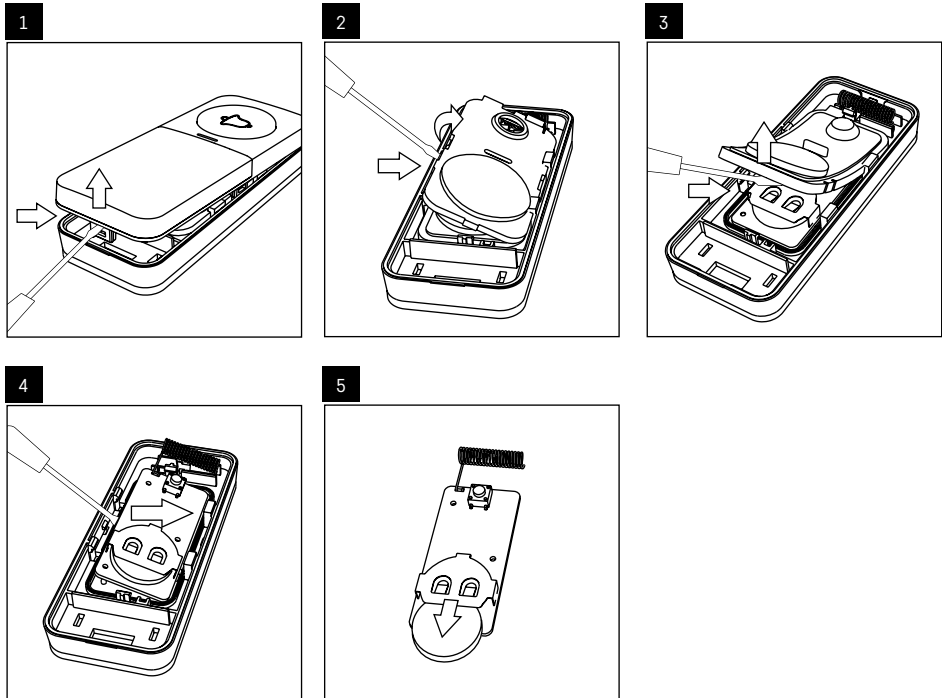
1. Repeatedly press the ringtone change button  or  located on the chime.
2. Each press of the button will play a different ringtone. The last ringtone played is the one that will be used.

## Setting the Bell Volume

You can set 5 volume levels.

Repeatedly press the  button on the chime. Each press changes the volume level (100 % – 75 % – 50 % – 25 % – 0 %). At 0 %, ringing is indicated only by the bell LED flashing.

## Changing the Button's Battery



## Mobile App



The chime can be controlled using a mobile app for iOS or Android.

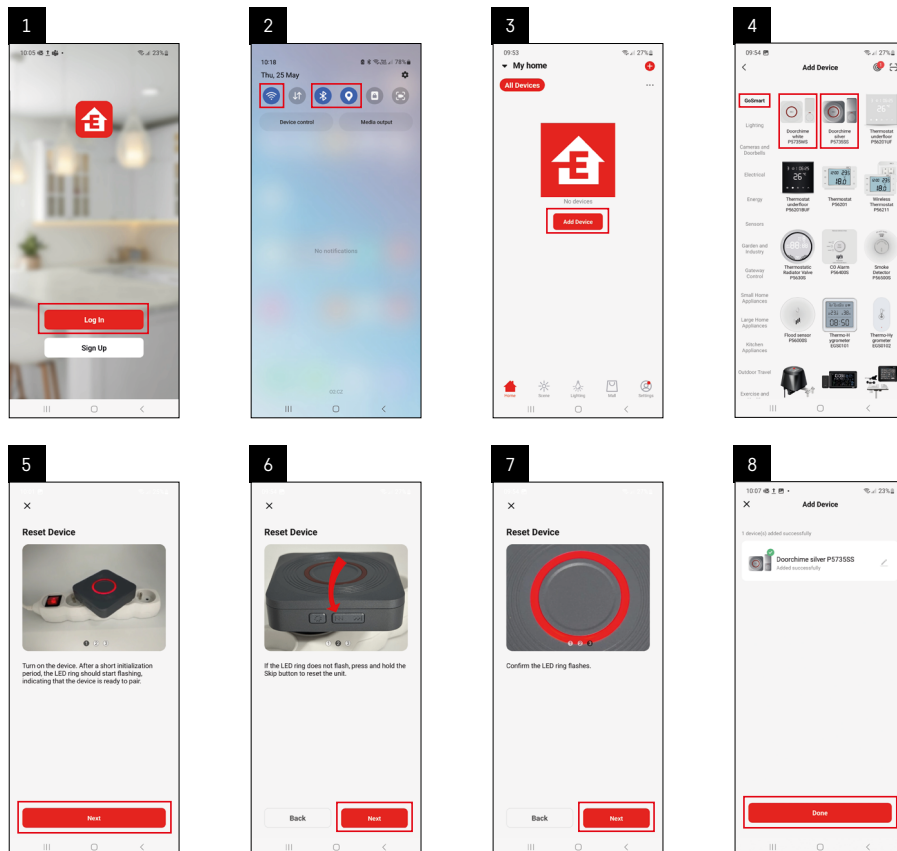
Download the EMOS GoSmart app for your device.

Tap the Log In button if you've used the app before.

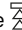

Otherwise, tap the Sign Up button and register.



## Pairing with the App



Plug the chime into a 230 V AC/50 Hz socket; the chime's LED will start flashing.

The LED is not flashing, long-press the  or  button for approx. 5 seconds.

Tap Add Device in the app.

Tap the GoSmart list on the left and tap the Doorchime silver P5735SS / Doorchime white P5735WS icon

Follow the instructions in the app and enter the name and password for your 2.4 GHz Wi-Fi network.

The pairing with the app will be completed within 2 minutes; the LED light will stop flashing.

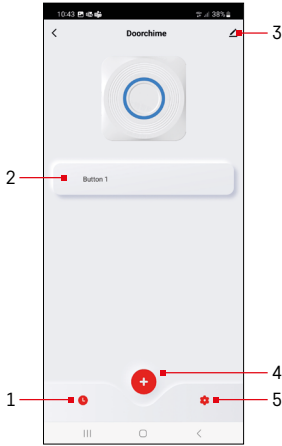
*Note: If the device fails to pair, repeat the process. 5 GHz Wi-Fi networks are not supported.*



## Controls and Functions

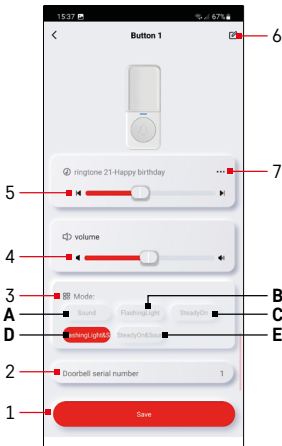
### App Menu

- 1 – ring history
- 2 – button settings
- 3 – advanced settings
- 4 – pairing of the button with the app
- 5 – ring notification settings



### Button Settings

- 1 – save settings
- 2 – ordinal number of the button
- 3 – ring mode settings (this setting only applies to buttons paired in the app)
- 4 – volume settings (this setting only applies to buttons paired in the app)
- 5 – ringtone settings (this setting only applies to buttons paired in the app)
- 6 – rename the button
- 7 – display list of ringtones



### Ring Mode Settings

You can set a different ring mode for each button paired with the app:

- A – acoustic signalisation only
- B – optical signalisation only
- C – optical signalisation only + LED constantly lit
- D – acoustic + optical signalisation
- E – acoustic and optical signalisation + LED constantly lit

Save the setting using the button at the bottom.

### Volume Settings

You can set a different volume for each button paired with the app.

You can set 5 volume levels.

Adjust volume using the slider or the left/right speaker icon (100 % – 75 % – 50 % – 25 % – 0 %). At 0 %, ringing is indicated only by the bell LED flashing.

Save the setting using the button at the bottom.

## Ringtone Settings

You can set a different ringtone for each button paired with the app to better identify which button was pressed to ring the chime.

Set the ringtone using the slider or the left/right arrow icon.

Save the setting using the button at the bottom.

## Pairing the Button with the Chime in the App

Tap the  icon; the button will switch to self-learning pairing mode, which lasts for 30 seconds.

During this time, press the ring button. The chime will ring and the button is now paired with the chime in the app.



This automatically ends self-learning mode.

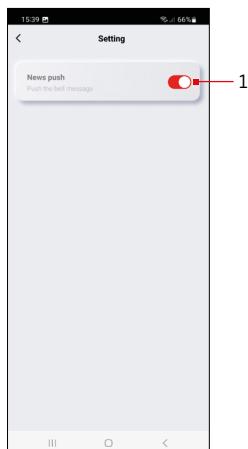
To pair another button, repeat the process.

A maximum of 2 buttons can be paired in the app.



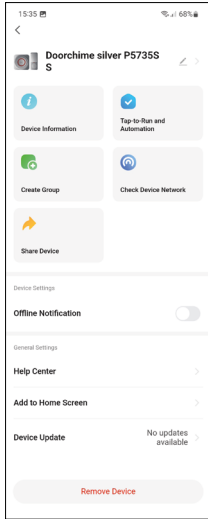
## Erasing the Memory of Paired Buttons

Slide the chosen button to the left  and confirm deletion .



## Ring Notification Settings

1 – activate displaying of notifications of button presses



## Advanced Settings

- **Device Information** – basic information about the device
- **Tap-To-Run and Automation** – scenes and automations assigned to the device
- **Create Group** – creates a group of similar devices
- **Check Device Network** – Wi-Fi network test
- **Share Device** – shares control of the device with another person
- **Offline Notification** – notifies when the device is offline for over 8 hours (e.g. power outage)
- **Help Center** – displays frequently asked questions and their solutions and provides the option to send us a question/suggestion/feedback directly
- **Add to Home Screen** – adds an icon for the device on the phone's home screen
- **Device Update** – updates the device
- **Remove Device** – unpairs the device



## Troubleshooting FAQ

### The chime does not ring

- The chime may be out of range.
  - Change the distance between the button and the chime; the range may be affected by local conditions.
- The button's battery may be low.
  - Replace the battery. Make sure it has the correct polarity with the + side up.
  - Pair the button with the chime again.
- The chime is not powered.
  - Make sure the chime is properly plugged into the socket and that power is on or the fuse/circuit breaker for the branch is on.



